

# CHRONICLE

2025 YEAR IN REVIEW & SERVICES



07

SAFETY COMES  
FIRST

08

ALL PAVING  
SERVICES

15

THE POWER OF  
TEAMWORK



# What's Inside

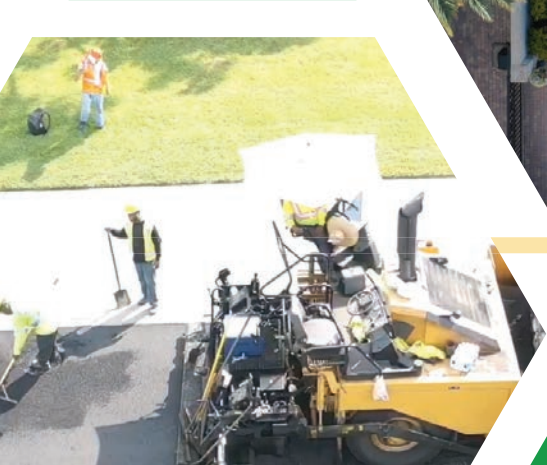
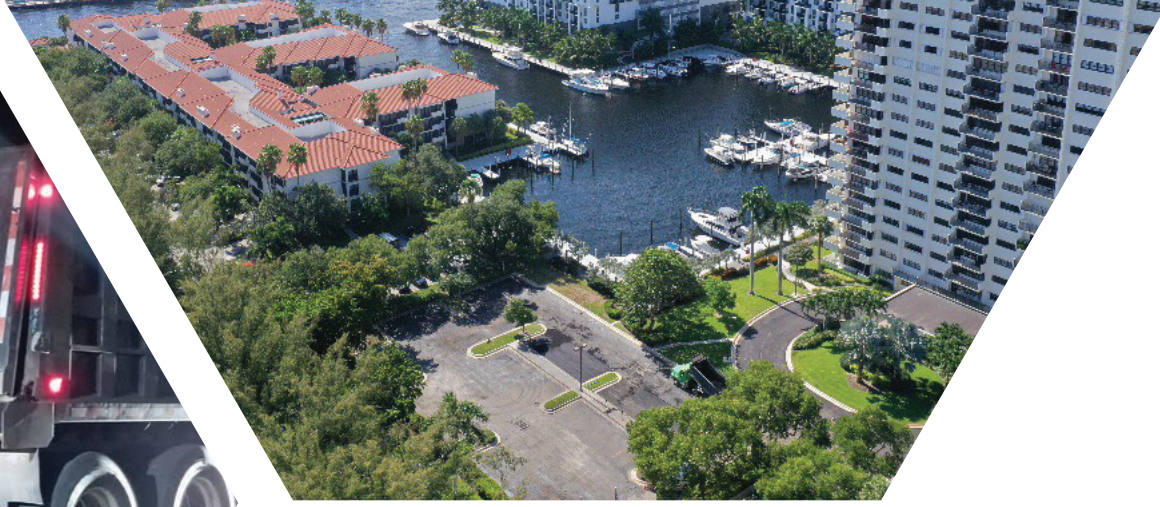
All Paving Locations ..... 4  
All Paving Facts ..... 6  
Safety Comes First ..... 7

## All Paving Services

Asphalt Services ..... 9  
Concrete Services ..... 10  
Sealcoating/Striping ..... 11  
ADA Compliance ..... 12  
Drainage Structures ..... 13  
Parking Garages ..... 14





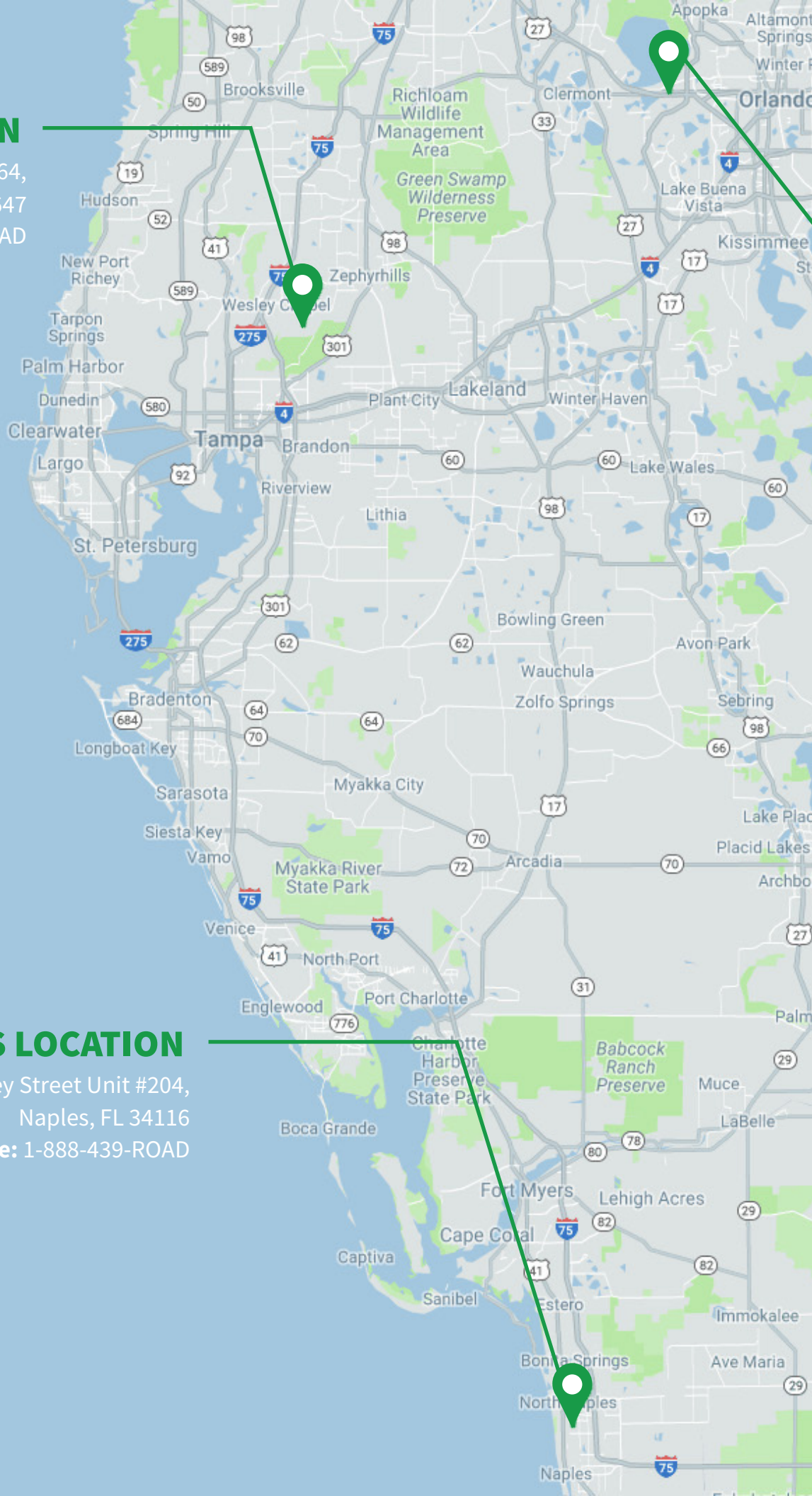




## TAMPA LOCATION

10006 Cross Creek Blvd. #64,  
Tampa, FL 33647

**Toll Free:** 1-888-439-ROAD



## NAPLES LOCATION

6200 Shirley Street Unit #204,  
Naples, FL 34116

**Toll Free:** 1-888-439-ROAD

# All Paving Services

## ORLANDO LOCATION

13750 W Colonial Dr. Ste 350 #237,  
Orlando, FL 34787

**Toll Free:** 1-888-439-ROAD

## JUPITER LOCATION

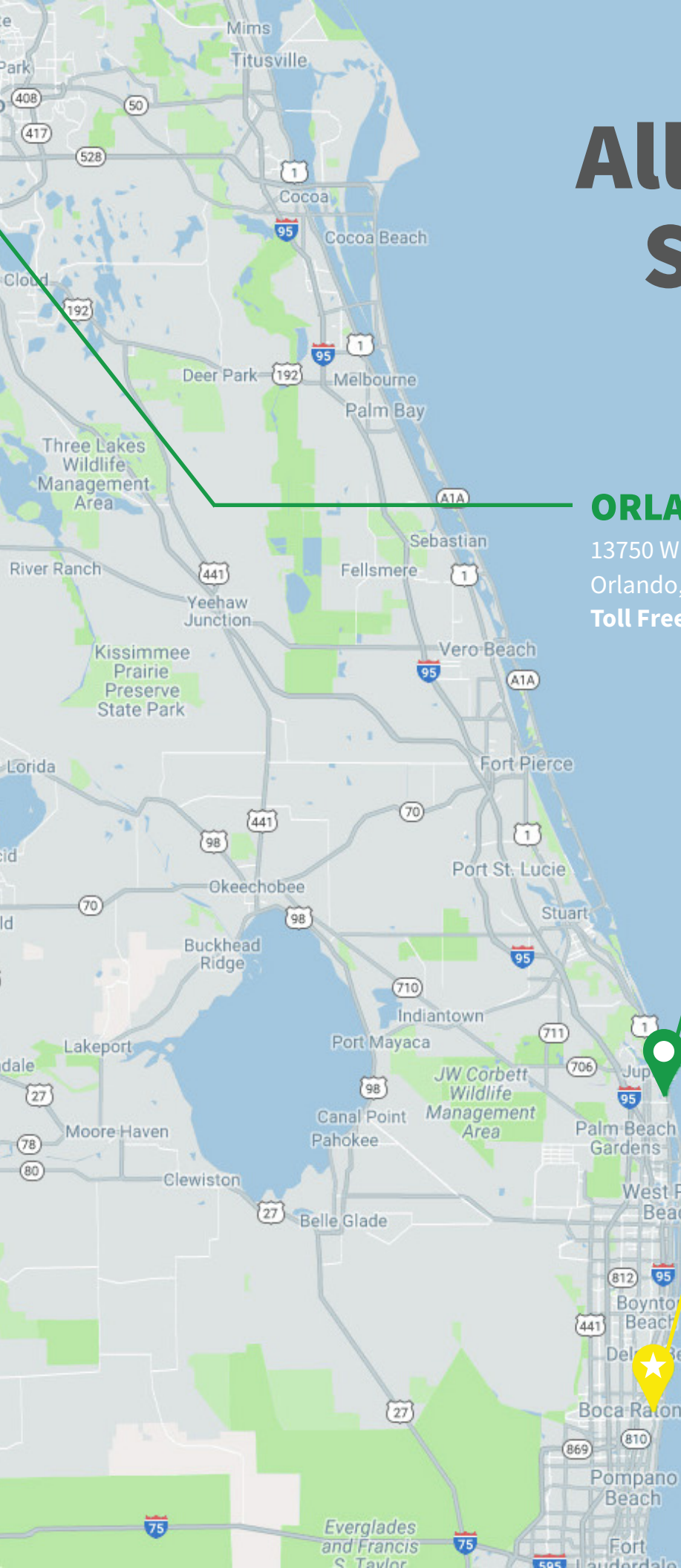
4300 South US Hwy 1 Suite 203,  
Jupiter, FL 33477

**Toll Free:** 1-888-439-ROAD

## BOCA RATON HEADQUARTERS

1700 N Dixie Hwy Suite #141,  
Boca Raton, FL 33432

**Toll Free:** 1-888-439-ROAD





# All Paving **SERVICES**



## All Paving is an **All-Inclusive**

We specialize in Parking Lots, everything to do with **Asphalt, Sealcoating, Concrete, ADA Compliance, Drainage and Property Maintenance**. We service Fort Lauderdale, Jupiter, Naples, Orlando, and Tampa.

All Paving has completed hundreds of projects across South Florida. Whether you need to touch up and enhance an existing pavement structure or need a new asphalt layer placed, All Paving is here to completely handle all of your pavement needs for your new business site and offer professional guidance along the way. We offer services to businesses of all sizes throughout the south

Florida area and have provided many smooth and durable paving services.

All Paving works hand-in-hand from the initial handshake through the finished product and beyond. Our team continuously updates our customers to provide peace of mind during your projects.

Strategically hiring skilled crews is essential to building a successful project. All Paving selects customized crews for the proper jobs; we make sure that each project has the most specialized tradesman completing the task.



# Asphalt Services

## ▶ New Asphalt Paving

Our asphalt installation provides sites with a smooth and fortified surface that will be built to meet top industry standards and will last for years to come. We have years of experience providing the highest quality asphalt that is laid correctly and in line with regulations in your area.

## ▶ Asphalt Repair & Patching

Asphalt can become worn and damaged due to roots, harsh weather, chemical spills, or overexposure to sunlight. It is important to have your asphalt serviced before extreme damage occurs, as further deterioration can lead to difficult and costly repairs. These new layers are compacted to the correct density and elevation, ensuring an even surface that blends with the asphalt and provides proper support.

## ▶ Asphalt Milling

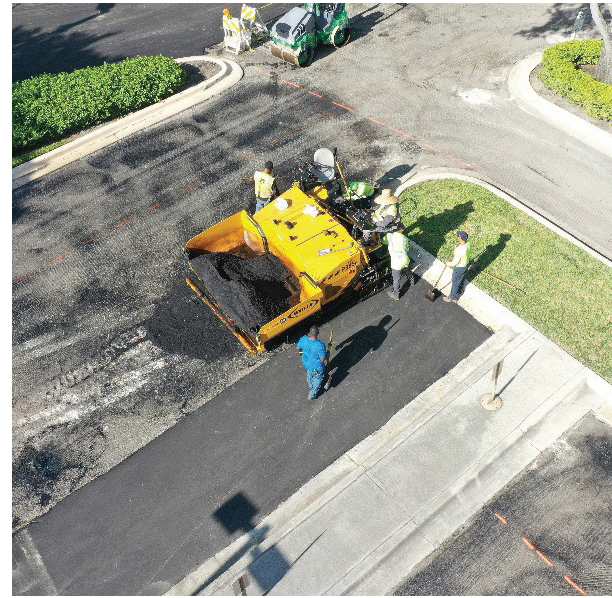
Asphalt milling consists of removing old and worn asphalt layers without affecting the foundation. Milling is one of the most cost-effective ways to improve your lot and maintain the existing slopes, drainage, and foundational construction.

## ▶ Asphalt Overlay

Asphalt overlay is another service that can utilize your existing foundation as a base for a new layer of asphalt. This process is much eco-friendlier and is perfect for sites that have lost color and quality after years of sun damage. It simply requires a new layer of asphalt applied directly over the existing layers. Asphalt overlays are the most cost-effective and environmentally conscious way of providing an updated asphalt surface.

## ▶ Asphalt Road Widening

It is the process of extending the edges of a roadway in order to allow extra lanes for vehicles. Road widening typically leads to improved traffic safety and vehicle capacity.



When it comes to building new roads and parking lots we are your **premiere** Asphalt firm.







## Concrete Services

### ► Concrete Slabs

Concrete slabs are often used for dumpster enclosures, bicycle racks, patron seating and waiting areas. Concrete slabs are reinforced with wire-mesh or fiber-mesh to increase their longevity, strength and sustainability.

### ► Pedestrian Concrete Sidewalks

All Paving also fixes and produces Commercial, Residential & Municipal walkways aimed at providing safe and increased foot traffic. These structures are formed and poured to engineering specifications.

### ► Concrete Curbing

Concrete Curbing is most commonly seen around parking lot landscaping islands. This preventative measure helps maintain the parking lots islands as well as landscape deterioration, which prevents asphalt damage and root intrusion. We install and repair all curbing.

### ► Concrete Parking Lots

Concrete Parking Lots are a great alternative to the more common Asphalt Parking Lots. Concrete Parking Lots provide a beautiful, durable surface when properly reinforced with wire-mesh or fiber-mesh. These parking lots are easily sustained by pressure cleaning and routine upkeep to maintain the newly-finished look.

### ► Concrete Ramps and Stairs

Concrete ramps are usually seen near loading docks, entrance and exits of a building to the parking lot. We install and repairs all of these structures. Concrete Stairs are most often seen at building entranceways and exits. We specialize in the installation of Concrete Staircases and the Handrails.





# Sealcoating/Striping

## ► Sealcoating

We design our sealcoating projects around our customers. By doing this we allow our customers to continue their normal business operations while we bring a renewed look to their pavement. This renewed look does not only appeal to our customers but also to other potential tenants and commercial property purchasers.

## ► Striping (Pavement Markings)

Striping is not only an aesthetic effect of property maintenance, but is required to fit specifications and is regulated by federal, state and local laws. Using the highest quality and most eco-friendly material pays dividends to providing the best products and end result for our customers.

## ► Thermoplastic Striping

Thermoplastic Markings are most commonly seen on Highways, City Streets and on Stop Bars in neighborhoods. These lines are reflective and become significantly apparent at night when headlights are shined on them.

## ► Reflective Pavement Markers

Reflective Pavement Markers are most commonly seen in the center of the roads to indicate separation of lanes, but also denote fire hydrants and other features of the roadway or parking lot.

## ► Signage

We install and Provide all types of Parking Lot and Roadway Signage such as Stop signs, Do Not Enter signs, Reserved signs. If your facility needs a sign we can take care of it!



## Benefits of Sealcoating

Over time, the sun's ultraviolet rays and oxygen in the air can oxidize the asphalt and damage it causing it to become brittle and faded in appearance. Brittle asphalt can crack, allowing water to enter the paved surface. Sealing protects the surface from damaging elements such as UV rays, water, oxygen, snow and car fluids. Sealcoating will extend the life of your pavement and save money, preventing any expensive repairs in the future.







## ADA Compliance

### ▶ ADA Handicap Ramps

Providing adequate accessibility to individuals with disabilities is fundamentally necessary to all Property Managers. This service includes ensuring wheelchair ramps have proper handrails, resistance, slope, clearance width and edging. These ramps require warning surfaces to meet ADA requirements.

### ▶ ADA Signage and Pavement Markings

The installation of ADA mandated signage is required to comply with federal guidelines. These signs give patrons with disabilities adequate notice of handicap accessible parking. We install, repair and replace all ADA Signage and Pavement Markings.

### ▶ ADA Detectable Warning Mats

ADA Detectable Warning Mats are required to be installed on sloped handicap ramps. These Detectable warning are most often seen near building entrances and sidewalk intersections. We specialize in installing, repairing, and maintaining these ADA Detectable Warning Mats.

### ▶ ADA Handrails

ADA Handrails are required on certain ADA ramps. These Handrails ensure safety for all patrons using the ADA ramp. We Install, repair and replace all types of ADA Handrails in Stainless Steel, Black Steel and many other varieties.



### ADA Accommodation Violation

If ADA Compliances are not followed, the maximum civil penalty for a first violation ranges between \$55,000 to \$75,000; for a subsequent violation the maximum is \$150,000. With All Paving, you can be rest assured that we follow all regulations to pass ADA Compliances.



# Drainage Structures

## ▶ Catch Basins

Catch Basins are seen in Commercial Parking Lots and Property Roadways. Over time Catch Basins need to be adjusted to enhance surface water flow. Additionally, they need to be cleaned and maintained to take full advantage of the drainage system. We install, repair and clean all types of Catch Basins.

## ▶ Inline Drains

You may recognize these from highway medians and roadway entrances of commercial properties. These structures allow dual direction drainage ideal when water needs to be drained from two areas simultaneously, such as the road and the property. We install repair and clean these Inline Drains.

## ▶ Drainage Piping Cleaning and Repair

Over time Drainage Pipes need to be adjusted to enhance water flow. Additionally, Drainage Pipes need to be cleaned and maintained to take full advantage of the drainage system on the property. Failing to maintain these areas can lead to costly Drainage Repairs. These services include maintaining the five (5) year certification.

## ▶ P - Inlet Drains

These drains are most common when the roadway is running parallel to an elevated sidewalk. These inlet drains are enclosed under the sidewalk to allow the pedestrian sidewalk to continue uninterrupted while effectively collecting the run-off water from the Roadway. We install repair and clean P-Inlets.

## ▶ Retention Areas

All Paving works hand in hand with architects to diagnose water retention concerns on properties. This service includes keeping up-to date with the five (5) year certification that is required by the Florida Department of Environmental protection and local municipal water districts.



## Why Catch Basins are Important

The primary reason for catch basins are to help prevent streets from becoming flooded with rainwater. Without catch basins, vehicles will lose its traction on the streets leading to hazardous and potentially fatal accidents. Thus, a catch basin is essential for your safety and the protection of your street.







# Parking Garages

## ▶ **Striping (Pavement Markings)**

Parking Garages are Striped to fit specifications regulated by federal, state and local laws. We stripe parking stalls, curbing and roadways throughout parking garages to make sure traffic flows safely.

## ▶ **Parking Lot Repairs**

Due to the heavy traffic influx, parking garages often need repair work to the roadways, parking stalls and columns. We specialize in all these necessary concrete repairs to parking garages.

## ▶ **Power Washing Parking Garages**

Parking garages collect significant debris over time. To maintain these parking facilities the concrete needs to power washed every few years. We handle parking garages of all sizes.

## ▶ **Pressure Cleaning Parking Garages**

Pressure cleaning protects and maintains the cleanliness of parking garages from weeds, overgrown plants. Over time, we recommend pressure cleaning all the stairwells, roof, interior and exterior walls. Pressure cleaning helps protect the concrete's life-span.

wed, the





# ALL Paving

**Corporate Headquarters**  
**Boca Raton, FL Office**  
23123 FL-7 #250,  
Boca Raton, FL 33428  
**PH: 954-688-9600**  
**Toll Free: 1-888-439-ROAD**

CONNECT WITH US ON SOCIAL MEDIA

