

# Asphalt Services

## ► New Asphalt Paving

Our asphalt installation provides sites with a smooth and fortified surface that will be built to meet top industry standards and will last for years to come. We have years of experience providing the highest quality asphalt that is laid correctly and in line with regulations in your area.

## ► Asphalt Repair & Patching

Asphalt can become worn and damaged due to roots, harsh weather, chemical spills, or overexposure to sunlight. It is important to have your asphalt serviced before extreme damage occurs, as further deterioration can lead to difficult and costly repairs. These new layers are compacted to the correct density and elevation, ensuring an even surface that blends with the asphalt and provides proper support.

## ► Asphalt Milling

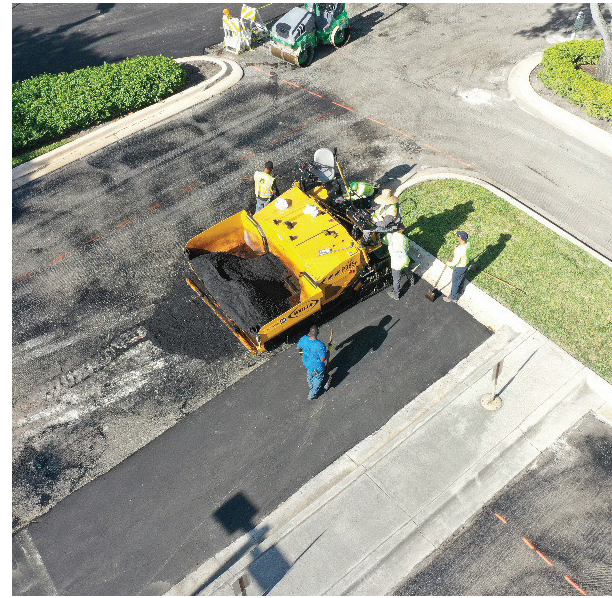
Asphalt milling consists of removing old and worn asphalt layers without affecting the foundation. Milling is one of the most cost-effective ways to improve your lot and maintain the existing slopes, drainage, and foundational construction.

## ► Asphalt Overlay

Asphalt overlay is another service that can utilize your existing foundation as a base for a new layer of asphalt. This process is much eco-friendlier and is perfect for sites that have lost color and quality after years of sun damage. It simply requires a new layer of asphalt applied directly over the existing layers. Asphalt overlays are the most cost-effective and environmentally conscious way of providing an updated asphalt surface.

## ► Asphalt Road Widening

It is the process of extending the edges of a roadway in order to allow extra lanes for vehicles. Road widening typically leads to improved traffic safety and vehicle capacity.



*When it comes to building new roads and parking lots we are your **premiere** Asphalt firm.*

